

# Architectural Meeting Schedule Signs

**NEW!**

KHSignage.com

Signs for Kingdom Halls & Assembly Halls

To Order Call 888.436.2221 or Fax 770.881.8249

## AMS-2100-S Series

### Post and Panel



See All Panel Shape  
Options Online



See All Panel Shape  
Options Online



#### Details:

**Sign Panel Material:**  
Metal - Aluminum

**Lettering Options:**  
Vinyl Lettering

**Standard Sizes:**  
16"h x 16"w, 18"h x 18"w  
24"h x 18"w, 30"h x 24"w  
36"h x 24"w, 24"h x 42"w  
Custom

**Standard Aluminum Colors:**  
Black, Burgundy, Ivory, White

**Standard Poly-Metal Colors**  
Almond Azara Blue, Black,  
Dark Blue, Dark Brown,  
Dark Green, Dark Red, White

**Post & Finial Options:**  
See Finial Collection  
See Post & Base Collections

#### Custom Options/Requirements:

Signs may be further customized to fit your unique design requirements. Signs can be custom powder coated to match any Benjamin Moore or Sherwin Williams color. Please call to discuss custom design options and colors.

**Optional Bolting plate available for concrete installations**



Please call to discuss any other custom design options and colors.

KH Signage is a division of Bella Teres LLC

Ver. 010113

# Architectural Meeting Schedule Signs

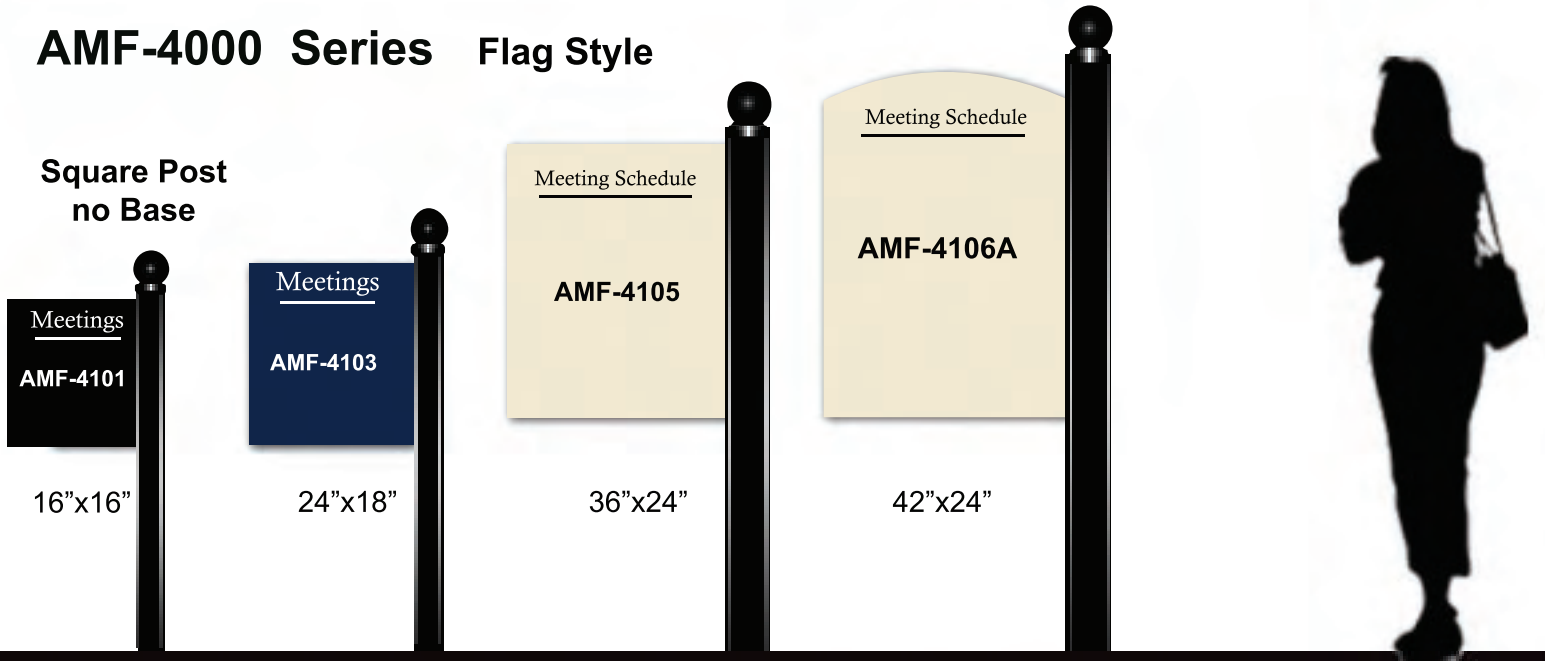
**NEW!**

KHSignage.com

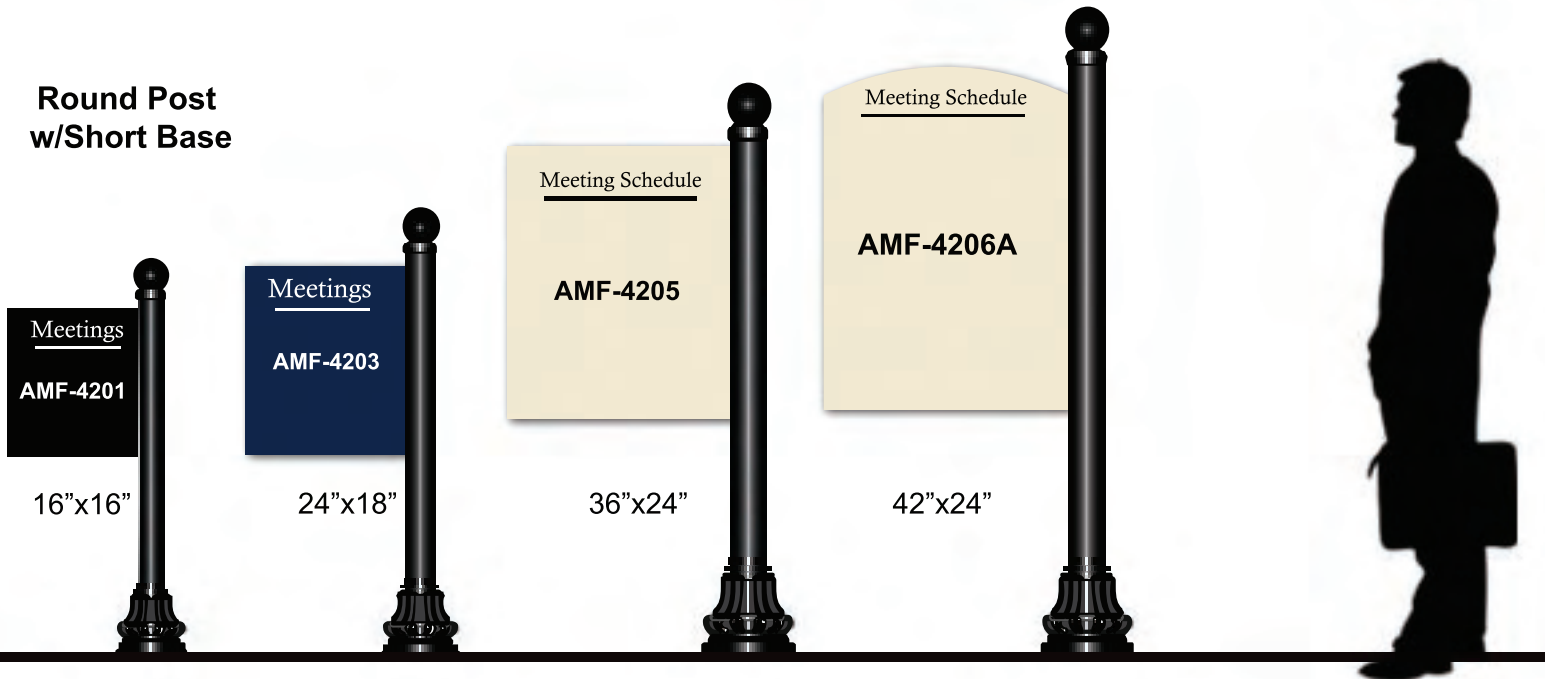
Signs for Kingdom Halls & Assembly Halls  
To Order Call 888.436.2221 or Fax 770.881.8249

## AMF-4000 Series Flag Style

### Square Post no Base



### Round Post w/Short Base



#### Details:

##### Sign Panel Material:

Aluminum - 1/8", 1/4"  
Poly-Metal - 1/8", 1/4"

##### Lettering Options:

Vinyl Lettering

##### Standard Sizes:

16"h x 16"w, 18"h x 18"w  
24"h x 18"w, 30"h x 24"w  
36"h x 24"w, 42"h x 24"w  
Custom

##### Standard Aluminum Colors:

Black, Burgundy, Ivory, White

##### Standard Poly-Metal Colors

Almond Azara Blue, Black,  
Dark Blue, Dark Brown,  
Dark Green, Dark Red, White

##### Post & Finial Options:

Square or Round Posts  
See Finial Collection  
Short Base

##### Custom Options/Requirements:

Signs may be further customized to fit your unique design requirements. Signs can be custom powder coated to match any Benjamin Moore or Sherwin Williams color. Please call to discuss custom design options and colors.

##### Optional Bolting plate available for concrete installations



Please call to discuss any other custom design options and colors.

KH Signage is a division of Bella Teres LLC

Ver. 010113

# Post & Base Collection

## Aluminum/Cast Metal Options

Item# POST-R100 - 1100 and POST-S100-200

NEW!

KHSignage.com

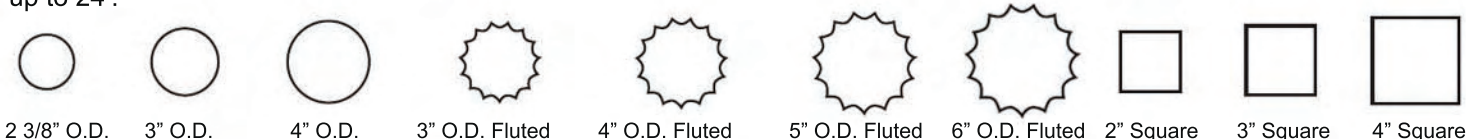
Signs for Kingdom Halls & Assembly Halls

To Order Call 888.436.2221 or Fax 770.881.8249

Mix and Match your post and base combinations.

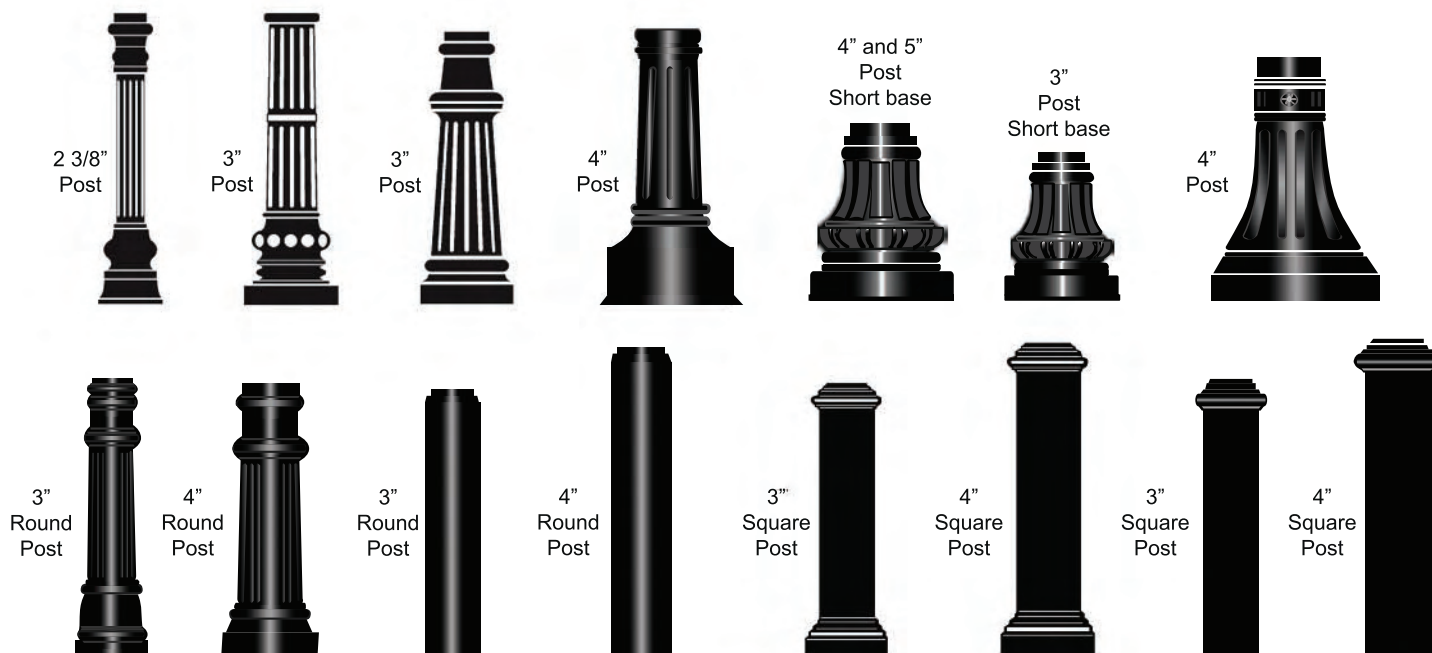
### Aluminum Post Options:

All Posts have a minimum of 1/8" wall thickness. Measurements are outside dimensions. Posts can be cut to lengths up to 24'.



### Slip on Cast Aluminum Base Options:

Post bases are one piece, slip on, non-structural cast aluminum. All round bases will fit both round smooth and round fluted posts.



### Details:

#### Standard Colors: Posts and Bases

Black, Burgundy, Ivory, White. All posts and bases are powder coated with High Performance semi-gloss industrial paint.

#### Installation Options:

Posts can be installed directly in ground or in concrete with optional Bolting Plate.

**Direct Bury:** Be sure to order post long enough to bury at least 24" in ground. Post base will slip over direct bury pole. Hole size should be determined by local codes. Always use concrete in direct bury procedure.

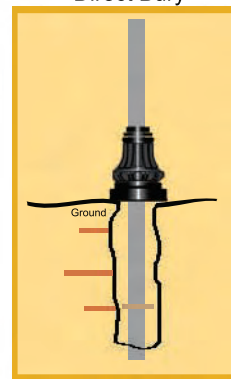
#### Concrete Walk/Pad Installation:

Optional Bolting plate can be used to secure post to concrete.

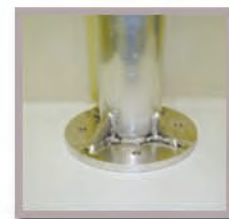
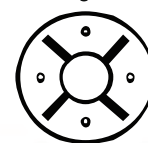
### Custom Options:

Posts and Bases can be custom painted to match any custom color.

Direct Bury



Bolting Plate



Reducing Collars



Call us to discuss your sign requirements today!

KH Signage is a division of Bella Teres LLC

Ver. 110813